

DESIGN & Planning Guide

5 BASIC STEPS

- 1 Choose and measure a site for your outdoor kitchen.
- 2 Determine the layout configuration (ie: straight, L-shaped, batwing, U-shaped, etc.)
- 3 Decide on the series, door style and polymer color to best compliment your home and suit your taste. Choose countertop design or if you'll supply your own countertop.
- 4 Choose your appliances; an insulated liner is required for most heat producing appliances. **Use the insulated liner dimensions to determine grill base size*.
- 5 Begin designing your layout by first determining placement of grill and other appliances. Fill in with the storage cabinets that best suit your storage needs. (Please note a corner requires 30").

** Order will not be processed without the specific manufacturers' name & model number of all appliances/sink.*

*** Check with manufacturers specifications for installation in combustable materials*

THE CABINET DESIGN SECTION

Please make your Cabinetry selections below:

Tuscan Teak™ Series Door Style:

- Tuscan Classic™ Tuscan Shaker™

Everlast Polymer™ Series Door Style:

- Oasis (PO) Laguna (PL)
 Martinique (PM)

Polymer Color:

- Black Coral (BC) Ocean Sand (OS)
 (cabinet color only for Tuscan Teak™ Series;
 Cabinet color and door color for
 Everlast Series™)

Countertop Choice:

- Soapstone
 Sardinian Beige Granite
 Verde Butterfly Granite
 Chestnut Brown Granite
 Gray Ash Granite
 None will supply own

Appliance Specifications (Appliances are not supplied by POK)

Grill Make & Model: _____

Liner Cut-Out Dimensions: _____

Side Burner Make & Model: _____

Liner Cut-Out Dimensions: _____

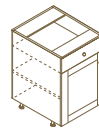
Insulated liners MUST be used for all heat producing appliances. See appliance specifications for sizes. All appliances must be installed consistent with the manufacturers specs for installation in combustible materials.

Refrigerator Dimensions: ___"H x ___"W x ___"D

Sink Make & Model: _____

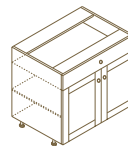
Other: _____

Base Cabinet w/Top Drawer & Interior Adjustable Shelf



1-Door Base Cabinets

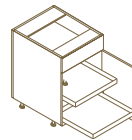
- B12 12" wide
 B15 15" wide
 B18 18" wide
 B21 21" wide



2-Door Base Cabinets

- B24 24" wide
 B27 27" wide
 B30 30" wide
 B33 33" wide
 B36 36" wide

Base Cabinet w/Top drawer & 2 Internal Pull-Out Drawers



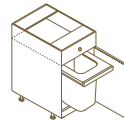
1-Door Base Cabinets

- B15POD 15" wide
 B18POD 18" wide
 B21POD 21" wide

2-Door Base Cabinets

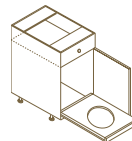
- B24POD 24" wide
 B27POD 27" wide

Waste Receptacle Base Cabinet w/Top Drawer and slide out waste pail



- BWR18 18" wide

LP Tray Base Cabinet w/Top Drawer and slide out tray to accommodate 20lb. propane tank



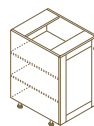
- BLP18 18" wide

3-Drawer Base Cabinets



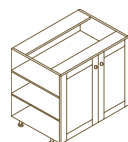
- 3DB12 12" wide
 3DB15 15" wide
 3DB18 18" wide
 3DB21 21" wide
 3DB24 24" wide

Base Cabinet with Full Height door & 2 Adj. Shelves



1-Door Cabinets

- BFD12 12" wide
 BFD15 15" wide
 BFD18 18" wide
 BFD21 21" wide



2-Door Cabinets

- BFD24 24" wide
 BFD27 27" wide
 BFD30 30" wide
 BFD33 33" wide
 BFD36 36" wide

Sink Base Cabinet w/False Front (no shelf)

1-Door Sink Base Cabinets

SB18	18" wide
SB21	21" wide

2-Door Sink Base Cabinets

SB24	24" wide
SB27	27" wide
SB30	30" wide
SB33	33" wide
SB36	36" wide

Open Shelf Base Cabinet with/ 2 Adjustable Shelves (no doors)

BOS18	18" wide
BOS21	21" wide
BOS24	24" wide

Storage Grill Base Cabinets* (see below if using Viking grill)

1-Door Grill Base Cabinet

		Cut-Out Dimensions
GB18	18" wide	12" min – 15" max
GB21	21" wide	15" min – 18" max

2-Door Grill Base Cabinet

GB24	24" wide	18" min – 21" max
GB27	27" wide	21" min – 24" max
GB30	30" wide	24" min – 27" max
GB33	33" wide	27" min – 30" max
GB36	36" wide	30" min – 33" max
GB39	39" wide	33" min – 36" max

3-Door Grill Base Cabinet

GB42	42" wide	36" min – 39" max
GB45	45" wide	39" min – 42" max
GB48	48" wide	42" min – 45" max
GB54	54" wide	48" min – 51" max
GB60	60" wide	54" min – 57" max

*Check min/max dimensions to accommodate your liner.

Grill Base & Warming Drawer Cabinet

Grill Base & Warming Drawer Cabinet

GBW42	42" wide	36" min – 39" max
GBW45	45" wide	39" min – 42" max
GBW48	48" wide	42" min – 45" max

Power Burner Base for Fire Magic*

High

PBGB2734	27" wide x 34" high
----------	---------------------

Low

PBGB2727	24" wide x 27" high
----------	---------------------

* area above burner needs to be lined with non-combustable material.

Storage Grill Base Cabinets for Viking Grills (Note: cabinet is 30" deep and requires countertops to be 33" deep)

2-Door Grill Base Cabinet

Viking Grill Model

VGB36	36" wide	VGBQ300T/ 0302T
-------	----------	-----------------

3-Door Grill Base Cabinet

VGB45	45" wide
-------	----------

VGBQ401T/ VGIQ410T and VGBQ412T

VGB60	60" wide	VGBQ530T/ VGIQ530T
-------	----------	--------------------

VGBQ532T/ VGIQ532T

Refrigerator Grooved Back Panel*

RFBP2430	24" wide
----------	----------

*1/2 Polymer with mounting cleats

Base Fillers

BF330	3" wide x 30" High
-------	--------------------

135° Angled Base Filler for Bat Wing Island

BF135A	12" wide x 12" wide x 30" high at 135°
--------	--

Polymer End Panel*

FE2635	26" x 35" x 3/4"
--------	------------------

*must cut to proper height during installation.

RAISED SEATING

Raised Corner for Seating*

RC3036	30" x 36"
--------	-----------

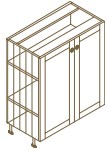
*when using with 40" H x 17" D cabinets, you must also order model LLP40 Leveling Leg Post to support outer edge of raised corner.

40" Full Height Door Base Cabinet*
(shallow depth for seating)



1-Door Cabinets 17" deep

- BFD1240 12" wide
- BFD1540 15" wide
- BFD1840 18" wide
- BFD2140 21" wide

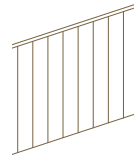


2-Door Cabinets 17" deep

- BFD2440 24" wide
- BFD2740 27" wide
- BFD3040 30" wide
- BFD3340 33" wide
- BFD3640 36" wide

* for use with full depth countertops and requires a FELLP2640.

Grooved Loose Back Panels * (1/2" thick polymer)



- FB2430 24" x 30"
- FB4830 48" x 30"
- FB9630 96" x 30"

* all cabinets include finished backs.

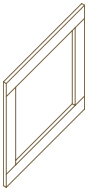
Toe Kick Covers (1/2" thick polymer)



- TK24 3.5" x 24"
- TK48 3.5" x 48"
- TK96 3.5" x 96"

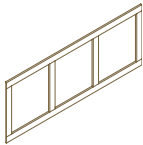
ACCESSORIES

Tuscan Teak™ Trim Kit for Finished End Panels



FETK26 .75" thick

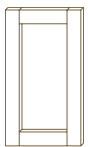
Tuscan Teak™ Trim Kit for Finished Back*



- FBTK48 up to 48" wide
- FBTK60 up to 60" wide
- FBTK72 up to 72" wide
- FBTK84 up to 84" wide
- FBTK96 up to 96" wide
- FBTK120 up to 120" wide

* specify exact size required.

Loose Tuscan Teak™ Shaker Door Applique



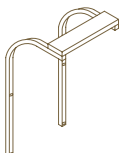
- LD1530 14.75" x 29.75"
- LD1830 17.75" x 29.75"
- LD2130 20.75" x 29.75"
- LD2630 26" x 29.75"

Loose Tuscan Teak™ Overlay Filler Applique



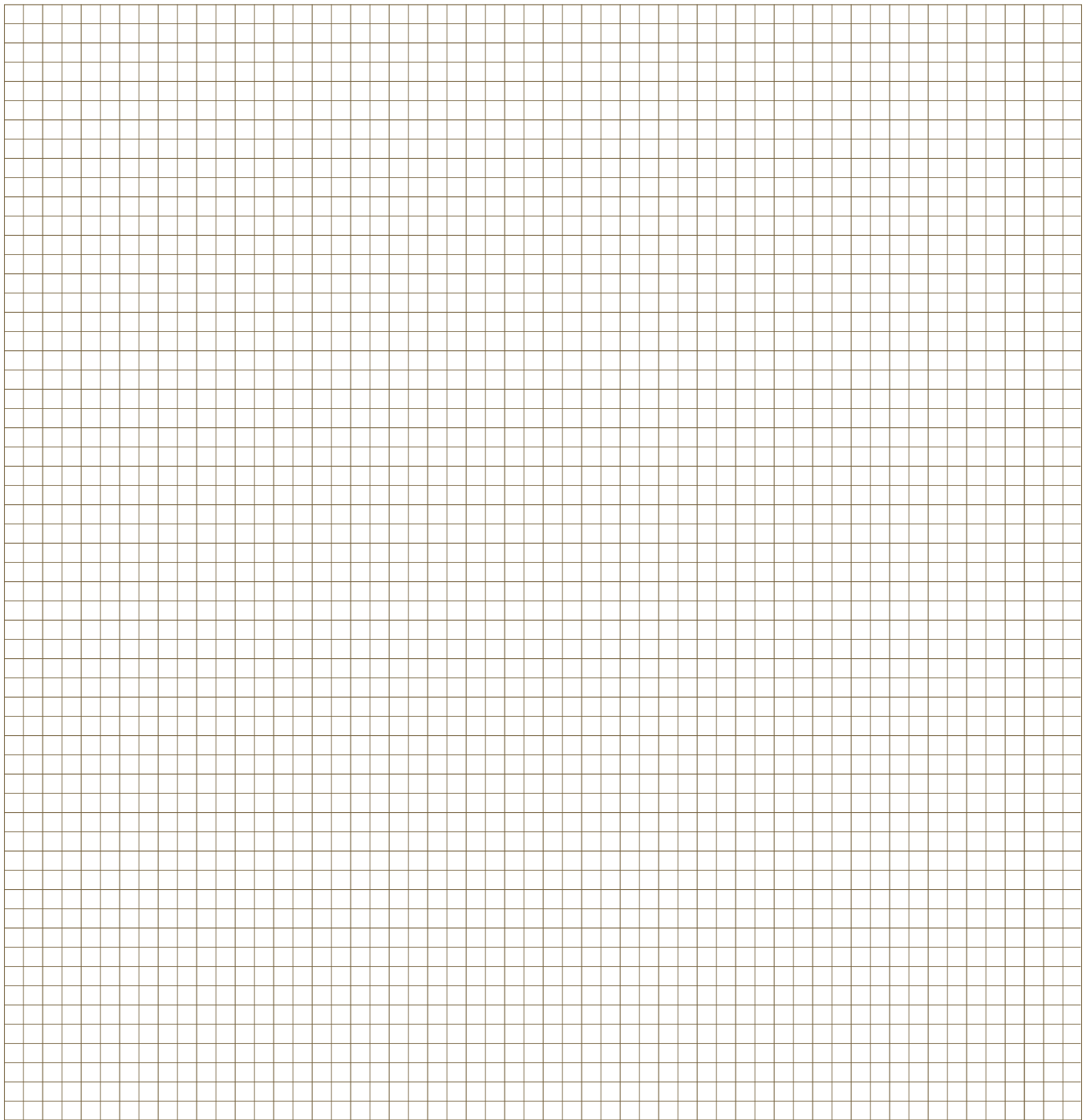
OF330 2.75" x 29.75"

Extended Countertop Support Bracket*



CTSB1226 12" wide

* bracket is required when countertop is extended beyond cabinetry 12" or more.

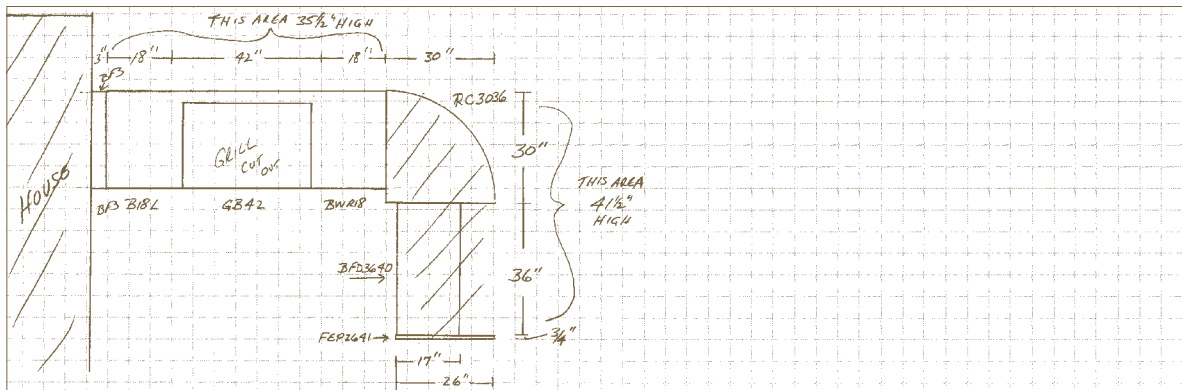


How to draw your layout:

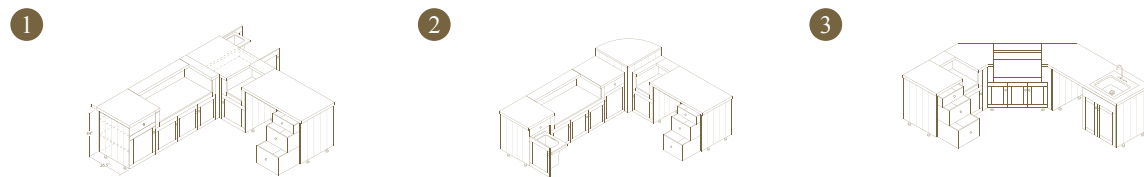
Show all walls. Draw basic layout, ie: straight, L-shaped, etc. List overall dimensions available for cabinetry and determine location of appliances. Base Cabinet modules are 27" deep (except where noted). Countertops overhang cabinets 1 1/2" front and back, therefore, countertops are 30" deep in an island application; 28 1/2" deep when installed against a wall. Each block = 3". Example: B12 is 4 blocks wide x 9 blocks deep. If layout is up against a structure, begin by showing area of structure to be included in your design (ie. existing walls, utilities, etc.) To turn a corner, 30" is required. (see example layout)



SAMPLE GRID LAYOUT:



SOME POSSIBLE OUTDOOR KITCHEN CONFIGURATIONS



CABINET SPECIFICATIONS

- 1 **Everlast polymer™** is a marine grade polymer which will not warp, rot, split, crack or delaminate. It is solid color through out regardless of thickness. It has UV inhibitors to guard against fade and is FDA approved for food contact.
- 2 **Typical base cabinets** are 34" high including leveling legs*. Depth is 26 1/2" plus 3/4" for door/drawer front thickness for an overall depth of 27 1/4". Cabinet sides, bottoms & top rails are constructed from 3/4" thick Everlast Polymer™. Cabinet backs, drawer boxes, shelves & toe kick covers are constructed from 1/2" thick Everlast Polymer™.
- 3 **All cabinets** are supplied with grooved finished backs and grooved finished ends at no charge.
- 4 **Weather resistant hardware** is used throughout: Stainless steel concealed hinges and galvanized ball bearing concealed under mount drawer runners. Knobs are nickel plated solid brass.

**Leveling legs are made from non-corrosive materials and allow cabinets to be adjusted from 33-3/4" to 34-3/4" to accommodate uneven surfaces such as flagstone, etc. Our leveling leg system raises the cabinet up off the ground which keeps the storage area of your cabinetry up off the patio surface.*

Doors & Drawer Fronts:

- 5 **Everlast Polymer™ Series:** Entire Cabinet is constructed from Everlast Polymer™ (see above) and feature door and drawer fronts made from 3/4" thick Everlast Polymer™ in 2 colors and 3 styles. All drawer fronts are flush faced design.
- 6 **Tuscan Teak™ Series:** Cabinet box is constructed from Everlast Polymer™ (see above) and feature door & drawer fronts made from Iroko, a non-endangered outdoor hardwood. All Tuscan Teak™ parts are prefinished with a waterbased, eco-safe outdoor protectant which must be reapplied a minimum of once a year (see warranty). When ordering 3 cabinets or more, Tuscan Teak™ finished end trim kits are included at no charge. Everlast Polymer™ cabinet box color must be specified. Tuscan Teak™ is available in 2 door styles. All drawer fronts are flush faced design.
- 7 **Countertops:** Several options of countertops can be purchased from Paradise Outdoor Kitchens with your outdoor cabinetry or you can have the option to supply your own. An important consideration for your new cabinetry is to keep your storage areas as dry as possible. For this reason, we have carefully chosen the materials we offer: Soapstone is impervious to almost all liquids and the 4 granite patterns we offer are sealed prior to leaving our factory.
- 8 **Installation:** All cabinet modules are shipped assembled and require only slight assembly which is to insert the leveling leg into the premounted receiving block. All cabinet sides are predrilled to accept the supplied connecting bolts to attach one cabinet to another. Installation of your Paradise Outdoor Kitchen cabinetry can be accomplished with the use of a level, and a #3 phillips screwdriver. This allows for ease of delivery and quickness of installation; typical cabinetry set-up is hours. Countertops are set in place by applying silicone (not supplied) onto the back supporting brace and all joints.

10 Year limited warranty - see dealer for details or visit www.ParadiseOutdoorKitchens.com



A product of:
Classic Home Elements
 540 Gleason Drive Moosic, PA 18507

www.ParadiseOutdoorKitchens.com